

EVEREST

REFRIGERATED



THE HIGHEST PERFORMING, MOST THERMALLY-EFFICIENT
TRAILER ON THE MARKET



“AFTER 25 YEARS TOGETHER IN THIS PARTNERSHIP, GREAT DANE AND THEIR EQUIPMENT CONTINUE TO SERVE OUR NEEDS WELL AND MEET AND EXCEED EVERY EXPECTATION. THE TRAILERS HAVE ALWAYS BEEN DURABLE, RELIABLE, AND WE’VE NEVER HAD AN ISSUE WITH KEEPING PRODUCT AT THE CORRECT TEMPERATURES, WHICH HELPS US MEET OUR BUSINESS OBJECTIVES.”

— Wood Fruitticher, Director of Transportation



EVEREST

REFRIGERATED

The Great Dane Everest reefer is designed for refrigerated carriers who value safety and efficiency. It is the highest performing, most thermally efficient trailer available, because it is built using the highest quality components and technology available for the greatest return on your investment.

Available in single- or multi-temp models, and offering an endless array of features and options, the Everest can be customized to fit your unique needs. With the assistance of our dedicated design team and hands-on engineering support, we can help you design trailers to meet your specific operational requirements.



The Greatest Stories Have Humble Beginnings.

Great Dane began in 1900 with blowpipe manufacturing, and we've worked hard to evolve with the last century.

For more than 120 years, we've listened to what our customers ask for, continually striving to provide innovative and custom solutions. We've invented new technologies to accommodate new business needs, pushing the trailer industry further ahead. For each trailer we manufacture, we deliver a unique combination of patented technology, design excellence, and extraordinary aftermarket support—because Great doesn't stop.

EVEREST

LIGHTWEIGHT

Thermally Efficient



AVAILABLE IN SINGLE-TEMP AND
MULTI-TEMP CONFIGURATIONS

Lightweight, Wood-Free Construction

With a base weight of 12,000 pounds, the Everest is extremely weight-competitive. Composite sills and furring replace the use of wood as support in construction, helping eliminate rot and moisture absorption.

Panel Foaming Process

The industry's most advanced modular panel foaming process produces a more thermally consistent and superior product. Our innovative modular design joins the panels to create a continuous blanket of insulation at all connection points.

Lining

Everest reefers come standard with Great Dane's exclusive PunctureGuard lining with Microban®, a broad-spectrum antimicrobial protection that fights bacteria growth, odors, and stains for the entire life of the trailer, covering the front, sides, rear doors, and ceiling, helping to reduce maintenance, increase payload potential, and offer a cleaner, greener journey.

For the ultimate interior protection, upgrade to Great Dane's patented ThermoGuard lining with Microban, which helps maintain insulation performance for the life of the trailer. Made with a proprietary barrier layer, ThermoGuard is virtually impermeable and designed to provide significant cost savings.



Long Life Floor System

Everest reefers feature an aluminum heavy-duty duct floor that is TTMA-rated for 18,000 pounds, making it one of the strongest floors in the industry. Composite sills are anchored by corrosion-resistant screws, and support the floor continuously for maximum support. An impact-resistant thermoplastic sub-pan completes the floor design, maximizing durability and extending the life of the trailer.

Sidewall Protection

Scuffbands provide extra sidewall protection and are available in various heights and materials, including integral extruded aluminum, high-density polyethylene (HDPE) plastic and Great Dane's fastener-free bonded PunctureGuard scuffband. Standard height is 10" and is available in additional 6" increments.



ANTIMICROBIAL INTERIOR LINER

THERMOGUARD

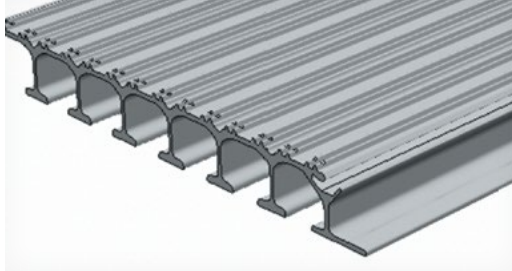
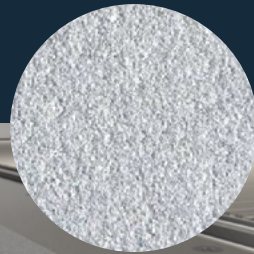
with MICROBAN

ThermoGuard™

Exclusively from Great Dane and made with a proprietary barrier layer, **ThermoGuard** helps maintain insulation performance, is virtually impermeable, and is designed to provide significant cost savings. ThermoGuard reduces cooling run time, helps maintain excess cooling capacity, and reduces fuel consumption and moisture intrusion.

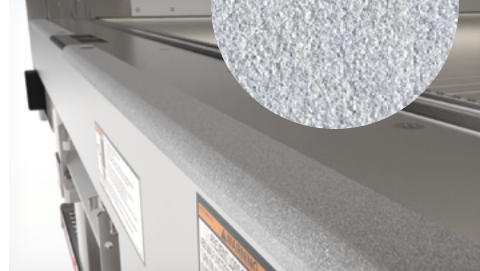
A NEW STANDARD IN CLEAN,
Everest is the only reefer on the market that offers broad-spectrum antimicrobial protection in its liner to fight bacterial growth for the entire life of the trailer.

PROTECTION THAT LIVES ON
MICROBAN®



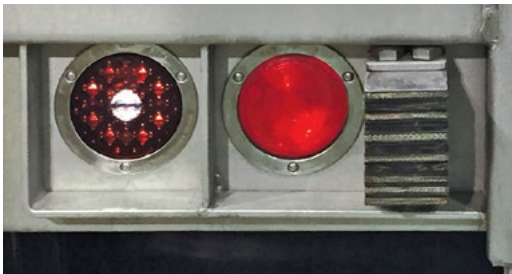
Heavy-Duty Reefer Cargo Safety-Grip Floor

The highest forklift-rated floor in the industry with a 20,000-pound rating, the heavy-duty concentrated reefer cargo Safety-Grip floor is a popular option for many grocery and foodservice applications. The positive traction Safety-Grip surface increases driver safety and reduces cargo movement.



SLIPNOT® Safe Surface Solution

SLIPNOT is an anti-slip surface for trailers that lasts for the long haul. Exclusive to Great Dane and standard on all Everest models with roll-up and side doors, SLIPNOT products transform metal surfaces into high-friction zones, mitigating slips and falls that last longer than traditional anti-slip solutions.



Optional 4-in-1 Backup Alarm System

Great Dane's exclusive 4-in-1 backup alarm system is designed to increase safety for drivers and pedestrians. This system features Grote's integrated lamp that combines all stop/tail/turn and backup functions into one industry-standard size lamp. The innovative 4-in-1 backup alarm only works when the wheels turn backward and is completely independent of the ABS system on the brakes.



Enhanced Rear Impact Guard Design

Great Dane's TOUGHGuard awarded hot-dipped galvanized rear impact guard is standard on all Great Dane trailer models, increasing safety in rear-impact collisions. Due to the rear impact guard's bolt-on design, a retrofit option is available to upgrade rear impact guards on 2007 and later models. The retrofit can be installed easily at any authorized Great Dane service center.

EVEREST

INNOVATIVE SOLUTIONS



Triple Seal Gasket Design

All-aluminum swing doors are sealed to eliminate moisture intrusion. A unique gasket design provides a triple seal to lock in cold air. The door opening has an integral PVC thermal barrier, which prevents the gaskets from freezing to the rear frame and reduces heat transfer. Optional stainless steel cover sheets are available.



Wireless Rear-Mounted Camera

Great Dane offers the industry's smallest wireless camera powered by a wireless auto-pairing system. The rear-mounted ASA Electronics mini wireless camera gives drivers increased awareness of the action behind their rigs on the road, in parking lots and during docking maneuvers.



Light and Reliable Wheel End Solution

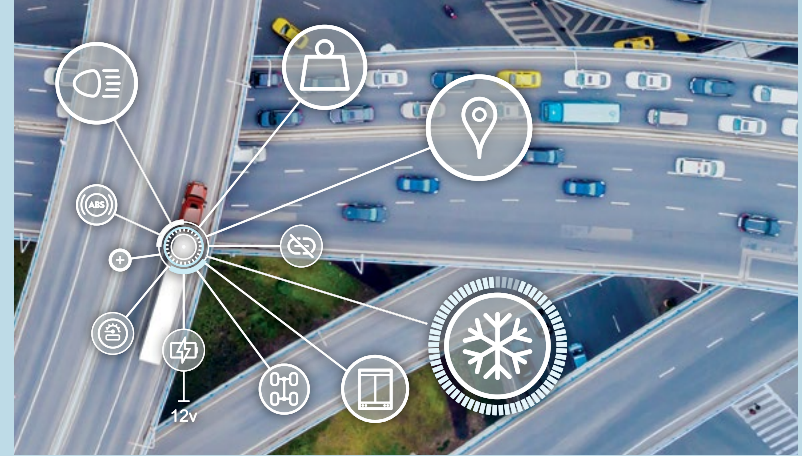
Stemco Platinum Performance Plus Package features an exclusive 8-year limited warranty. This simple wheel end installation, which now includes Auto-Torq spindle nuts, helps eliminate complexity and specialty tools, is compatible with all hub manufacturers, and guarantees optimal bearing load for extended service life.

With an integrated locking mechanism ensuring security and easy removal, you'll gain peace of mind and efficiency while saying goodbye to washers, clips, snap rings, screws, and keepers.



LED Lighting

Great Dane offers a variety of PC-rated LED lighting options for 180-degree visibility. The LED Exterior Light Package features Grote's MicroNova® DOT lamps and dual-intensity ID cluster lights, along with the Long Life Light System, which is backed by a 10-year warranty.



FleetPulse

The first-ever built-in monitoring system designed by trailer experts, FleetPulse is a standard telematics solution for trailers, delivering data through 4G LTE to a convenient portal. From pre-trip inspection checks to the final delivery, FleetPulse offers real-time data, so drivers and fleets can protect fleet efficiency and cargo.

With sensors to monitor tire inflation, weight distribution, door sensors, ABS codes, lights, GPS location, and, most recently, TRU data with Thermo King's integration, this smart trailer system can help fleets reduce equipment failure, downtime, safety issues, and fines.



Ultra Road Shield

Introducing Ultra Road Shield: Great Dane's robust yet lightweight aluminum exterior side skin features a dual-coat acrylic paint system, helping to safeguard trailers from the elements and enhancing corrosion protection. Defying weathering and maintaining a superior appearance, this coating resists metal markings and stains, and simplifies cleaning.

Corrosion Defense

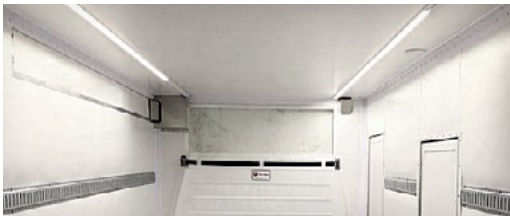
Hot-dipped galvanization is a standard feature on Everest rear impact guards, support gear mounting plate, bracing, k-brace, x-drive shaft, and anti-nosedive legs. This uniform zinc coating helps shield vital components, ensuring top-notch protection in harsh environments.

CUSTOMIZE TO MEET YOUR NEEDS



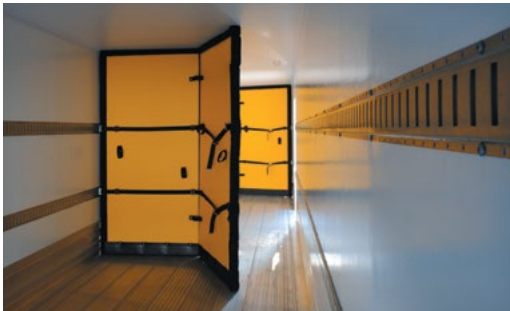
Customization

Offering extreme versatility, the Everest reefer can be customized to specifically fit the requirements of any number of operations. Customizable options include length, width, height, floor type and insulation thickness. Great Dane engineers offer personalized support to help you build the trailer that meets your unique needs.



Interior LED Strip Lighting

Interior lighting options include new LED strip lights that are seamlessly integrated into the ceiling, offering 74% increased brightness, improved light dispersion, and easier maintenance. Say goodbye to internal roof components, helping to promote a safer workplace, enhance driver efficiency, and reduce maintenance expenses. Other options include spot lamps and motion sensors.



Multi-Temp Compartmentalization

For maximum productivity, the Everest reefer can be divided into as many as three temperature-controlled compartments and an ambient section.



Side Door Design

Great Dane's unique all-aluminum side door design delivers unparalleled performance. The Everest is available with multiple side door heights, widths, and locations to provide quick and easy access to cargo. SLIPNOT safety grip solution is also a standard safety feature on side doors.

The exclusive blade lock side door closure exerts constant pressure along the full height of the door to prevent air loss around the total perimeter of the door. The low-profile design eliminates protruding hinges and lock rods, reducing potential for damage.



UNPARALLELED AFTERMARKET SUPPORT



GREAT DANE
FLEET SOLUTIONS

Authorized Great Dane Parts & Service

Go right to the source for quality repairs. Our technicians know Great Dane trailers better than anyone. That's why service at your Great Dane service center or authorized dealer offers more than just simple repairs. Unlike independent shops, Great Dane locations are staffed with trained technicians knowledgeable about the most current products and repair techniques. Plus, our direct connection to the factory ensures you get the engineering and parts you need when you need them.



Accredited Training Provider

ASE-Accredited Training Program

Our trailer technician training program emphasizes safety and meets a high national standard established by The National Institute for Automotive Service Excellence (ASE). Great Dane is the first semi-trailer OEM to achieve ASE accreditation for a training program. The Great Dane technicians who work on your trailer have proven their skills and are focused on service excellence. They get the job done right and on time.



GREAT DANE'S NETWORK ACROSS NORTH AMERICA IS UNMATCHED IN THE INDUSTRY

At Your Service

Leveraging the right network could be the most important decision in your business today, so having a trusted partner with you in the marketplace is priceless.

Great Dane's extensive network of more than 100 factory-direct service centers, full-line dealers, and authorized independent distributors across North and South America ensures you get the quality service and support you need when and where you need it. Buy, sell, service, or trade—we're here to keep your business on the road to success.



Visit us online to learn more about the Everest and Great Dane's full line of trailers, truck bodies, and innovations.



GreatDane.com